

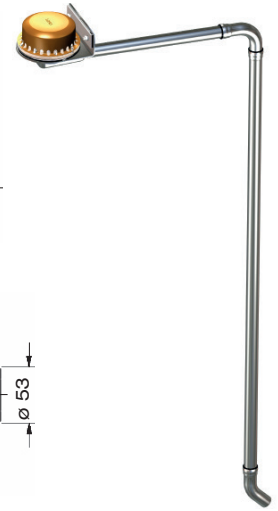
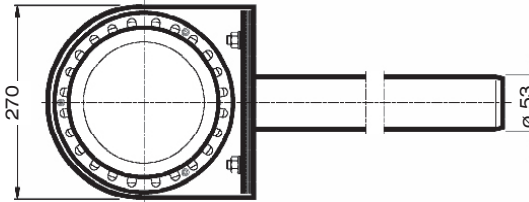
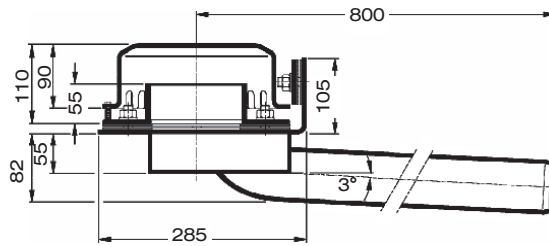
Choose drain for piece list on page one!

DN 50

LX500-1X

Drain Art.-No. 01383.050X
Weight: 5,4 kg

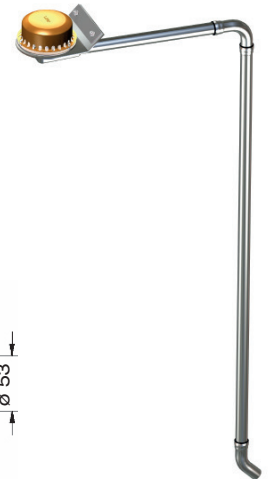
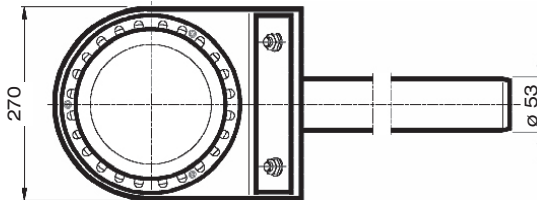
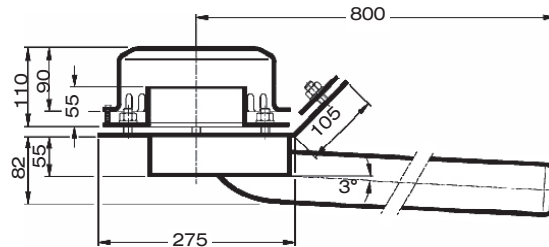
Series 79 (RD)
clamping flange 90°
for plastic roofing sheets



LX500-2X

Drain Art.-No. 01381.050X
Weight: 5,4 kg

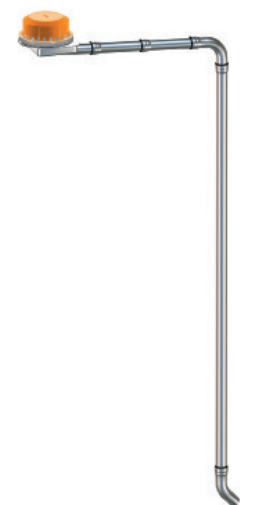
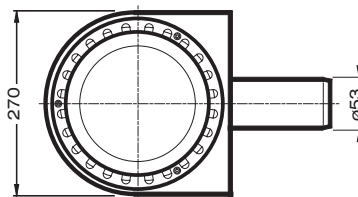
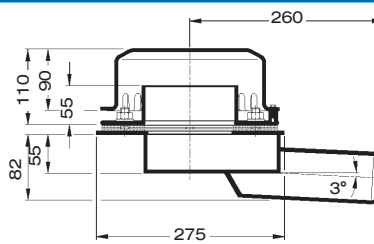
Series 79 (RD)
clamping flange 45°
for bituminous roofing sheets



LX500-4X

Drain Art.-No. 01394.050X
Weight: 4,1 kg

Series 88
clamping flange
without raised edge
for bituminous and plastic roofing sheets



Please note:

For drainage systems with siphonic flow it is vital that only LORO-X pipes and fittings in the combination as indicated are used. Mixture or exchange of system parts may result in lower discharge capacities! The height of the downpipe must be a min. 4.2m for the indicated capacity to be obtained. If roof drain and downpipe are fitted by different crews, then do follow the system setup acc. to the LX-data sheet at www.loro-x.com
Heat tracing: Lorowerk recommends to check all drains and pipes with regard to their frost-sensibility. Where necessary, these parts should be upgraded with heat tracing.